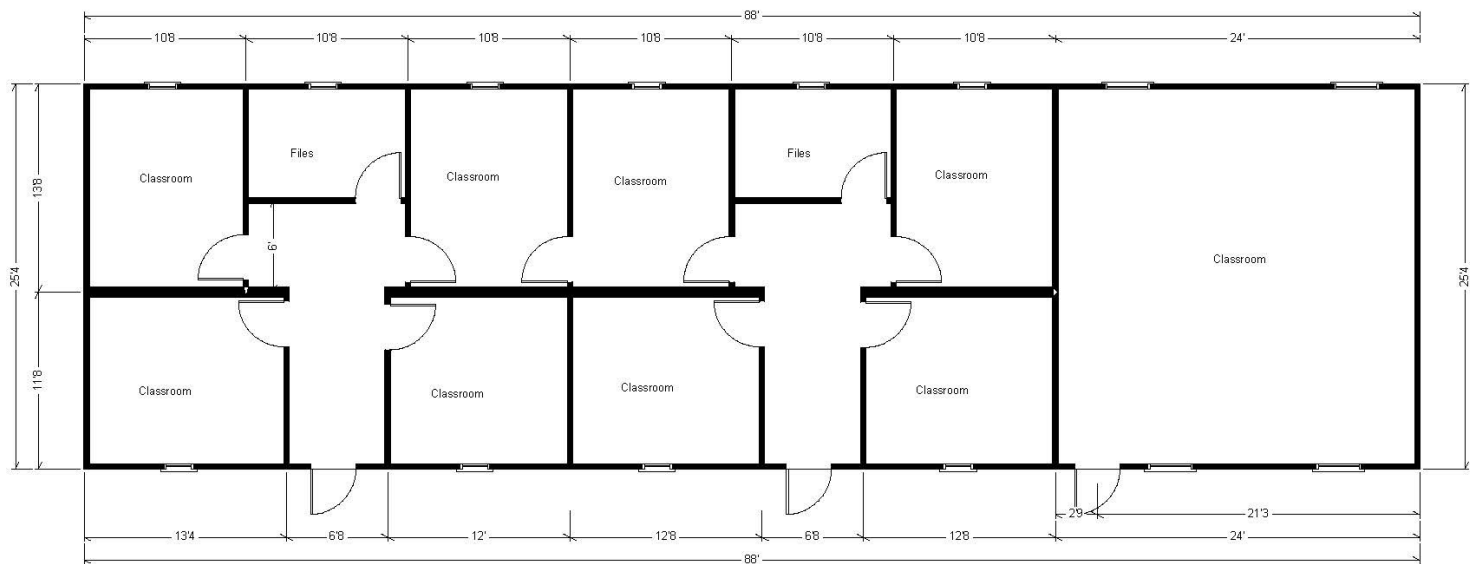


# Modular Building Available For Sale or Lease

## 26' x 88' Modular Classroom Building

### Building Description

- ◆ 26' x 88' FL Code Modular Educational Building
- ◆ Educational Occupancy
- ◆ Approved for HVWZ Wind Zone
- ◆ EPDM Roof System
- ◆ Hardie Panel Siding (Concrete Board)
- ◆ Vinyl Covered Gypsum Wall Covering
- ◆ Vinyl Composite Tile
- ◆ Central Air Conditioning



This building is available for sale or lease. For more information contact us at (954) 960-1550 or via email at [buildings@advancedmodular.com](mailto:buildings@advancedmodular.com).

Advanced Modular Structures, Inc. 1911 NW 15th St. Pompano Beach, FL 33069